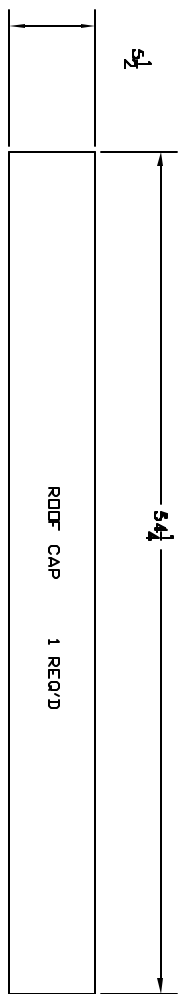
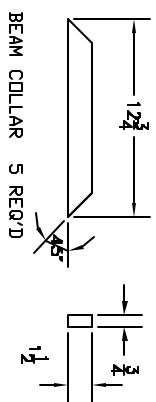
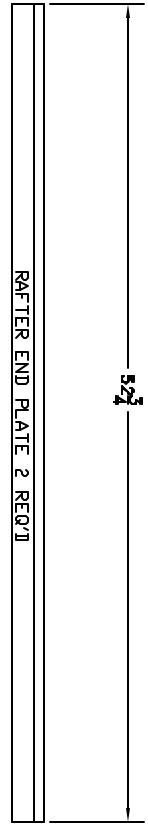
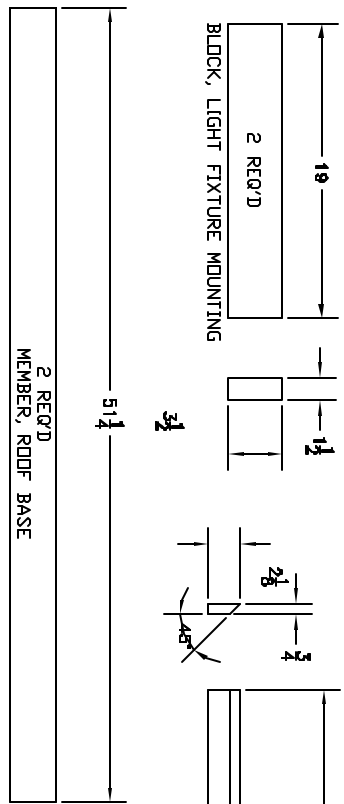
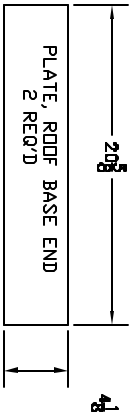
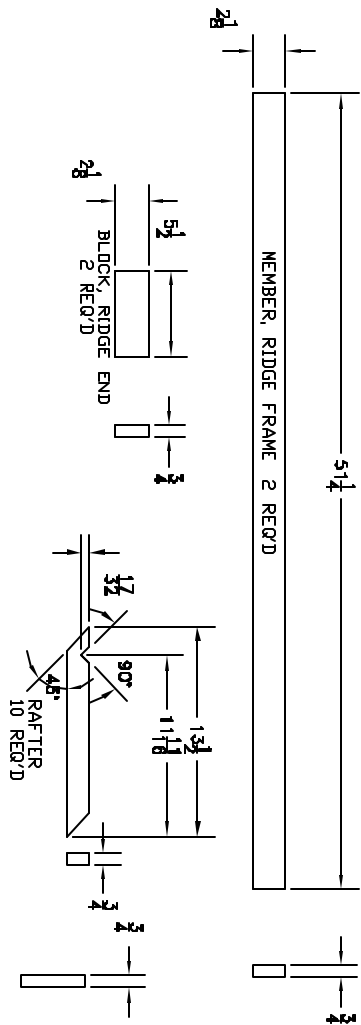


NOTES:

1) ALL PIECES ARE RESAWN FROM 1" PINE LUMBER WITH THE EXCEPTION OF THE LIGHT FIXTURE MOUNTING BLOCK WHICH REQUIRES A 2" X 4".

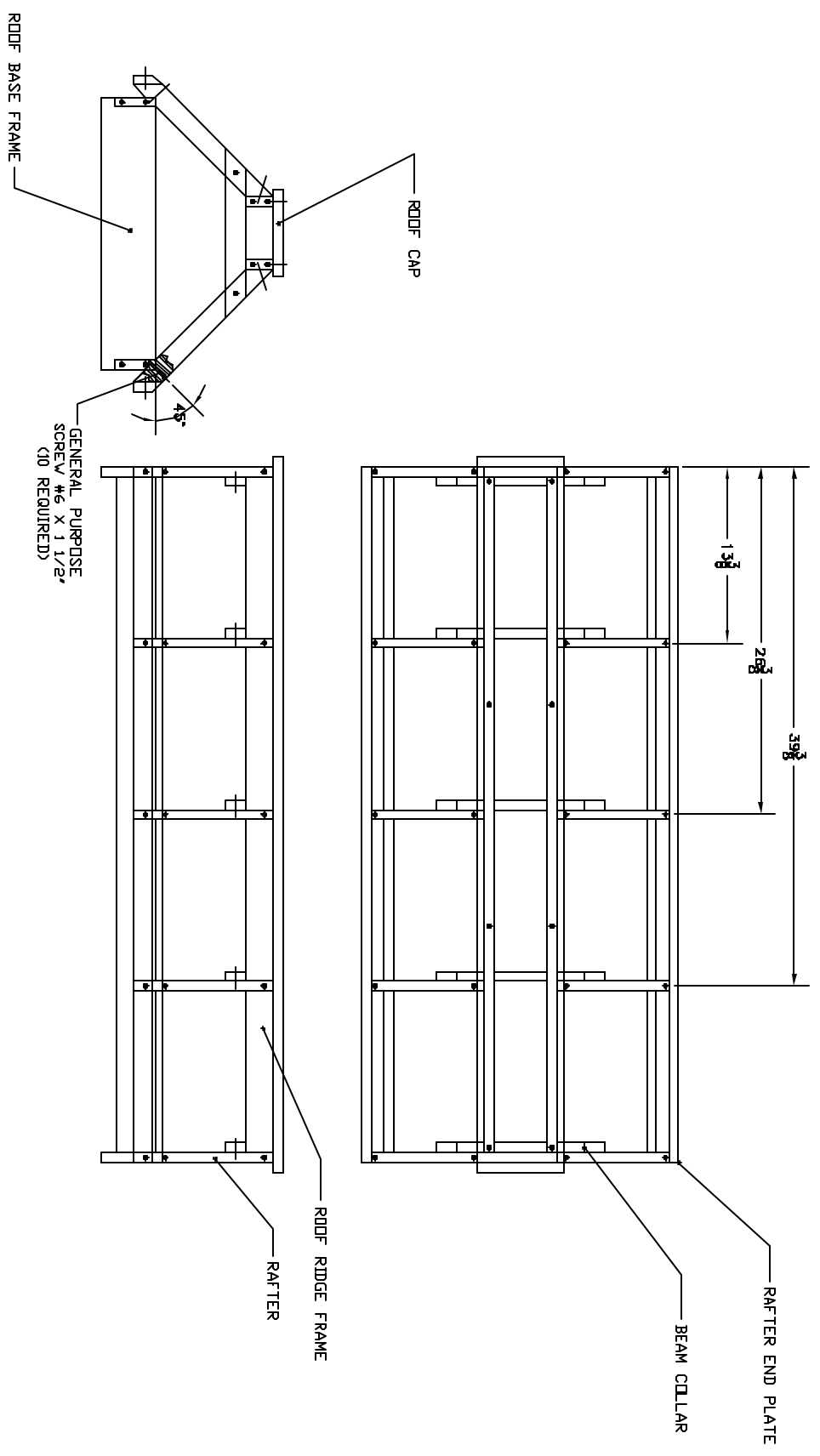


ROOF CAP	1
MEMBER, RIDGE	2
BLOCK, RIDGE FRAME END	2
BEAM COLLAR	5
RAFTER	10
RAFTER END PLATE	2
BLOCK, LIGHT FIXTURE MOUNTING	2
PLATE, ROOF BASE END	2
MEMBER, ROOF BASE	2



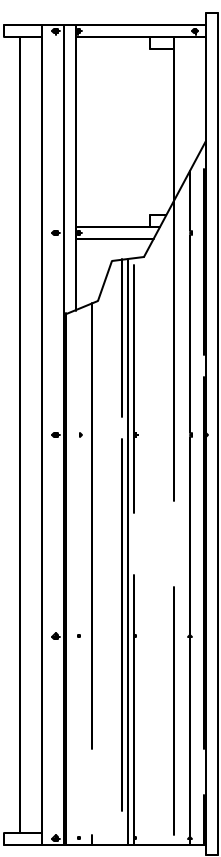
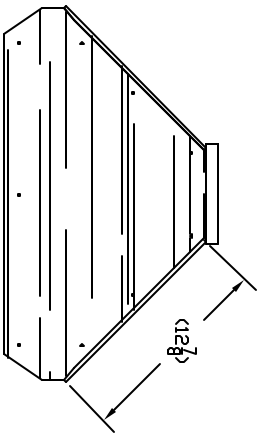
GENERAL NOTES 1. ALL DIMENSIONS ARE IN INCHES UNLESS OTHERWISE NOTED. 2. MATERIALS TO BE USED SHALL BE AS SPECIFIED IN THE DRAWINGS. 3. THE CONTRACTOR SHALL BE RESPONSIBLE FOR OBTAINING ALL NECESSARY PERMITS. 4. THE CONTRACTOR SHALL MAINTAIN ACCESS TO ALL UTILITIES AT ALL TIMES. 5. THE CONTRACTOR SHALL PROTECT ALL EXISTING STRUCTURES AND UTILITIES. 6. THE CONTRACTOR SHALL MAINTAIN PROPER DRAINAGE AND EROSION CONTROL. 7. THE CONTRACTOR SHALL MAINTAIN A SAFE WORKING ENVIRONMENT. 8. THE CONTRACTOR SHALL MAINTAIN ALL RECORDS AND DRAWINGS. 9. THE CONTRACTOR SHALL MAINTAIN ALL NECESSARY INSURANCE. 10. THE CONTRACTOR SHALL MAINTAIN ALL NECESSARY LICENSES.		PROJECT INFORMATION PROJECT NO. _____ DRAWING NO. _____ DATE _____ SCALE _____ SHEET NO. _____ OF _____	
APPROVALS CONTRACTOR: _____ ARCHITECT: _____ ENGINEER: _____		ROOF FRAME COMPONENTS DRAWN BY: _____ CHECKED BY: _____ DATE: _____ FIGURE # 12 SHEET 2 OF 6	

- NOTES:
- 1) MEASURE AND MARK RAFTER PLACEMENT. FASTEN RAFTER SEGMENTS BY PILOT DRILLING AND SECURING WITH 1 1/2" X #6 GENERAL PURPOSE DRYWALL TYPE SCREWS AT ANGLE AND POSITION DEPICTED.
 - 2) PLACE RIDGE FRAME WORK INTO POSITION. PILOT DRILL AND SECURE WITH 1 1/4" #6 GENERAL PURPOSE DRYWALL TYPE SCREWS.
 - 3) ADD BEAM COLLAR MEMBERS AND RAFTER END PLATES WITH 1 1/4" LENGTH SCREWS.
 - 4) POSITION, PILOT DRILL AND SECURE ROOF CAP.



NORTH COUNTY MAGNET LABORERS LOCAL 144		APPROVALS DATE	
PROJECT NO. DRAWING NO.	DATE BY	CHECKED DATE	DATE
ROOF FRAMEWORK		FIGURE #15	
SHEET 5 OF 6		5 OF 6	

- 1) THE FRAMEWORK SHOULD BE STAINED PRIOR TO THE ADDITION OF THE ROOF PANELS. I PREFER A GENERAL PURPOSE REDWOOD LATEX STAIN.
- 2) SELECT YOUR CHOICE OF SHEETING TO COVER THE SIDES AND ROOF PROPER. I HAVE SUCCESSFULLY USED LUAN UNDERLAYMENT WHICH MEASURES APPROXIMATELY 3/16" INCH THICK.
- 3) LAYOUT, CUT AND FIT END PANELS. SAND EXPOSED SURFACE. FINISH PANELS AT THIS TIME WITH STAIN AND/OR VARNISH.
- 4) MEASURE OUT FOR THE ROOF PANELS WHICH SHOULD OVERLAP THE END PANELS AND TUCK UP UNDER THE ROOF CAP. SAND SURFACES AND FINISH.
- 5) POSITION PANELS, PILET DRILL AND SECURE WITH PANELING OR ALUMINUM NAILS OF YOUR CHOICE.



MATERIALS		APPROXIMATE		MATERIALS		MATERIALS		MATERIALS	
NO.	DESCRIPTION	QTY.	UNIT	NO.	DESCRIPTION	QTY.	UNIT	NO.	DESCRIPTION
1	2x4	10	ft	1	2x4	10	ft	1	2x4
2	2x6	10	ft	2	2x6	10	ft	2	2x6
3	2x8	10	ft	3	2x8	10	ft	3	2x8
4	2x10	10	ft	4	2x10	10	ft	4	2x10
5	2x12	10	ft	5	2x12	10	ft	5	2x12
6	2x14	10	ft	6	2x14	10	ft	6	2x14
7	2x16	10	ft	7	2x16	10	ft	7	2x16
8	2x18	10	ft	8	2x18	10	ft	8	2x18
9	2x20	10	ft	9	2x20	10	ft	9	2x20
10	2x22	10	ft	10	2x22	10	ft	10	2x22
11	2x24	10	ft	11	2x24	10	ft	11	2x24
12	2x26	10	ft	12	2x26	10	ft	12	2x26
13	2x28	10	ft	13	2x28	10	ft	13	2x28
14	2x30	10	ft	14	2x30	10	ft	14	2x30
15	2x32	10	ft	15	2x32	10	ft	15	2x32
16	2x34	10	ft	16	2x34	10	ft	16	2x34
17	2x36	10	ft	17	2x36	10	ft	17	2x36
18	2x38	10	ft	18	2x38	10	ft	18	2x38
19	2x40	10	ft	19	2x40	10	ft	19	2x40
20	2x42	10	ft	20	2x42	10	ft	20	2x42
21	2x44	10	ft	21	2x44	10	ft	21	2x44
22	2x46	10	ft	22	2x46	10	ft	22	2x46
23	2x48	10	ft	23	2x48	10	ft	23	2x48
24	2x50	10	ft	24	2x50	10	ft	24	2x50
25	2x52	10	ft	25	2x52	10	ft	25	2x52
26	2x54	10	ft	26	2x54	10	ft	26	2x54
27	2x56	10	ft	27	2x56	10	ft	27	2x56
28	2x58	10	ft	28	2x58	10	ft	28	2x58
29	2x60	10	ft	29	2x60	10	ft	29	2x60
30	2x62	10	ft	30	2x62	10	ft	30	2x62
31	2x64	10	ft	31	2x64	10	ft	31	2x64
32	2x66	10	ft	32	2x66	10	ft	32	2x66
33	2x68	10	ft	33	2x68	10	ft	33	2x68
34	2x70	10	ft	34	2x70	10	ft	34	2x70
35	2x72	10	ft	35	2x72	10	ft	35	2x72
36	2x74	10	ft	36	2x74	10	ft	36	2x74
37	2x76	10	ft	37	2x76	10	ft	37	2x76
38	2x78	10	ft	38	2x78	10	ft	38	2x78
39	2x80	10	ft	39	2x80	10	ft	39	2x80
40	2x82	10	ft	40	2x82	10	ft	40	2x82
41	2x84	10	ft	41	2x84	10	ft	41	2x84
42	2x86	10	ft	42	2x86	10	ft	42	2x86
43	2x88	10	ft	43	2x88	10	ft	43	2x88
44	2x90	10	ft	44	2x90	10	ft	44	2x90
45	2x92	10	ft	45	2x92	10	ft	45	2x92
46	2x94	10	ft	46	2x94	10	ft	46	2x94
47	2x96	10	ft	47	2x96	10	ft	47	2x96
48	2x98	10	ft	48	2x98	10	ft	48	2x98
49	2x100	10	ft	49	2x100	10	ft	49	2x100
50	2x102	10	ft	50	2x102	10	ft	50	2x102
51	2x104	10	ft	51	2x104	10	ft	51	2x104
52	2x106	10	ft	52	2x106	10	ft	52	2x106
53	2x108	10	ft	53	2x108	10	ft	53	2x108
54	2x110	10	ft	54	2x110	10	ft	54	2x110
55	2x112	10	ft	55	2x112	10	ft	55	2x112
56	2x114	10	ft	56	2x114	10	ft	56	2x114
57	2x116	10	ft	57	2x116	10	ft	57	2x116
58	2x118	10	ft	58	2x118	10	ft	58	2x118
59	2x120	10	ft	59	2x120	10	ft	59	2x120
60	2x122	10	ft	60	2x122	10	ft	60	2x122
61	2x124	10	ft	61	2x124	10	ft	61	2x124
62	2x126	10	ft	62	2x126	10	ft	62	2x126
63	2x128	10	ft	63	2x128	10	ft	63	2x128
64	2x130	10	ft	64	2x130	10	ft	64	2x130
65	2x132	10	ft	65	2x132	10	ft	65	2x132
66	2x134	10	ft	66	2x134	10	ft	66	2x134
67	2x136	10	ft	67	2x136	10	ft	67	2x136
68	2x138	10	ft	68	2x138	10	ft	68	2x138
69	2x140	10	ft	69	2x140	10	ft	69	2x140
70	2x142	10	ft	70	2x142	10	ft	70	2x142
71	2x144	10	ft	71	2x144	10	ft	71	2x144
72	2x146	10	ft	72	2x146	10	ft	72	2x146
73	2x148	10	ft	73	2x148	10	ft	73	2x148
74	2x150	10	ft	74	2x150	10	ft	74	2x150
75	2x152	10	ft	75	2x152	10	ft	75	2x152
76	2x154	10	ft	76	2x154	10	ft	76	2x154
77	2x156	10	ft	77	2x156	10	ft	77	2x156
78	2x158	10	ft	78	2x158	10	ft	78	2x158
79	2x160	10	ft	79	2x160	10	ft	79	2x160
80	2x162	10	ft	80	2x162	10	ft	80	2x162
81	2x164	10	ft	81	2x164	10	ft	81	2x164
82	2x166	10	ft	82	2x166	10	ft	82	2x166
83	2x168	10	ft	83	2x168	10	ft	83	2x168
84	2x170	10	ft	84	2x170	10	ft	84	2x170
85	2x172	10	ft	85	2x172	10	ft	85	2x172
86	2x174	10	ft	86	2x174	10	ft	86	2x174
87	2x176	10	ft	87	2x176	10	ft	87	2x176
88	2x178	10	ft	88	2x178	10	ft	88	2x178
89	2x180	10	ft	89	2x180	10	ft	89	2x180
90	2x182	10	ft	90	2x182	10	ft	90	2x182
91	2x184	10	ft	91	2x184	10	ft	91	2x184
92	2x186	10	ft	92	2x186	10	ft	92	2x186
93	2x188	10	ft	93	2x188	10	ft	93	2x188
94	2x190	10	ft	94	2x190	10	ft	94	2x190
95	2x192	10	ft	95	2x192	10	ft	95	2x192
96	2x194	10	ft	96	2x194	10	ft	96	2x194
97	2x196	10	ft	97	2x196	10	ft	97	2x196
98	2x198	10	ft	98	2x198	10	ft	98	2x198
99	2x200	10	ft	99	2x200	10	ft	99	2x200
100	2x202	10	ft	100	2x202	10	ft	100	2x202

ROOF PANELING